

Safety: A Core Value, It is who we are, in everything we do

Construction Safety Week Safety Conference

Hong Kong
May 22, 2012

Alex Leong – VP, Safety Health & Environment, Asia
Charlton Wong – Executive VP, HK
Eric Wong – SRE (SH&E), CWB Project Team

AECOM

Outline of Presentation:

- Introduction
- About AECOM
- Overview of our safety practices:
 - Core Values
 - 12 Guiding Principles
 - Site Safety Programs
 - AECOM Project Examples
- Together, we can achieve Zero Accident!



“A · E · C · O · M” 五个字母代表公司创建之初的主要业务范畴：

A 代表建筑设计 (Architecture) ;
E 代表工程 (Engineering) ;
C 代表咨询 (Consulting) ;
O 代表运营 (Operations) ;
M 代表维护 (Maintenance) 。

从1990年发展至今，AECOM的业务已涵盖
交通运输、基础设施、水务、城市发展、能源、环境、岩土工程、总体规划、建筑、
建筑工程、景观设计、经济规划及项目管理/施工管理等各个领域。

关于AECOM：服务全球 机遇无限
About AECOM: Global Reach, Endless Possibilities

AECOM

AECOM 服务全球

The AECOM Story – Global Reach

125

业务遍及全球125个国家

Serves clients in approximately 125 countries

740+

全球超过740间办公室

Over 740 offices around the world

45K+

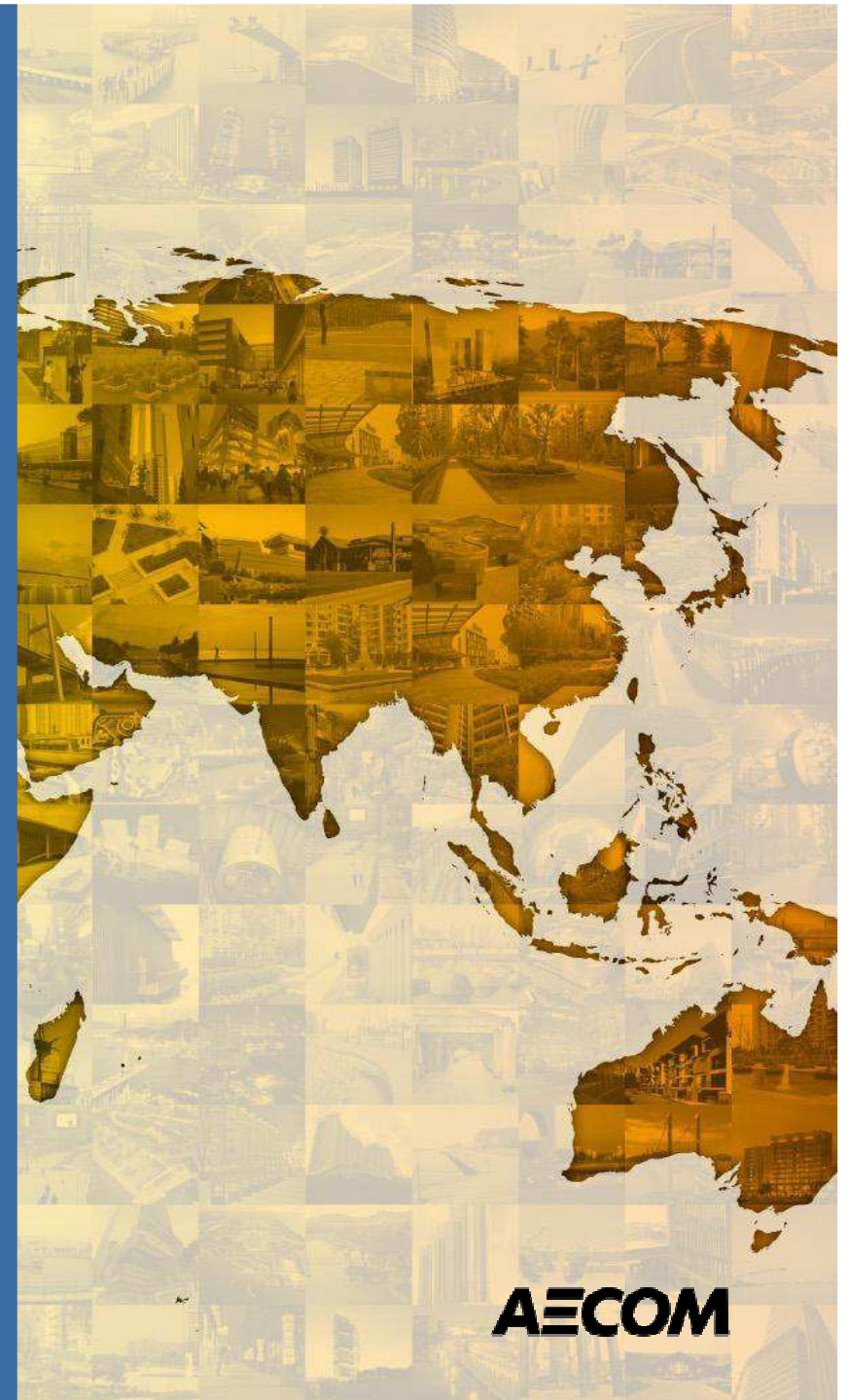
全球45,000余名专业员工

45,000+ dedicated professionals globally

8bn

截止2011年12月31日，过去12个月的营业额达80亿美元。

Revenue of >US\$8.0 billion during the 12-month period ended Dec. 31, 2011



2011 《工程新闻记录》排名 ENR Ranking

总体排名 Top 500 Design Firms	1
国际市场 Global 150 Design Firms	2
纯设计 Pure Design	1
交通运输 Transportation	1
桥梁 Bridges	1
海事及港口设施 Marine & Port Facilities	1
大型交通设施 Mass Transit	2
空港 Airports	2
高速公路 Highways	3
一般建筑 General Building	1
商业建筑 Commercial Offices	1
政府办公楼 Government Offices	2
科教建筑 Education	2
医疗建筑 Health Care	3
酒店及会展建筑 Hotels, Motels, Convention Centers	4
下水管道/污水处理 Sewer / Wastewater	2
有害废物处理 Hazardous Waste	2
水务 Water	3
废水处理 Wastewater Treatment	4
固废处理 Sewerage & Solid Waste	5
传输及分配 Transmission and Distribution	1
水电设施 Hydro Plants	5
能源 Power	6
项目和工程管理 Program & Construction Management	4

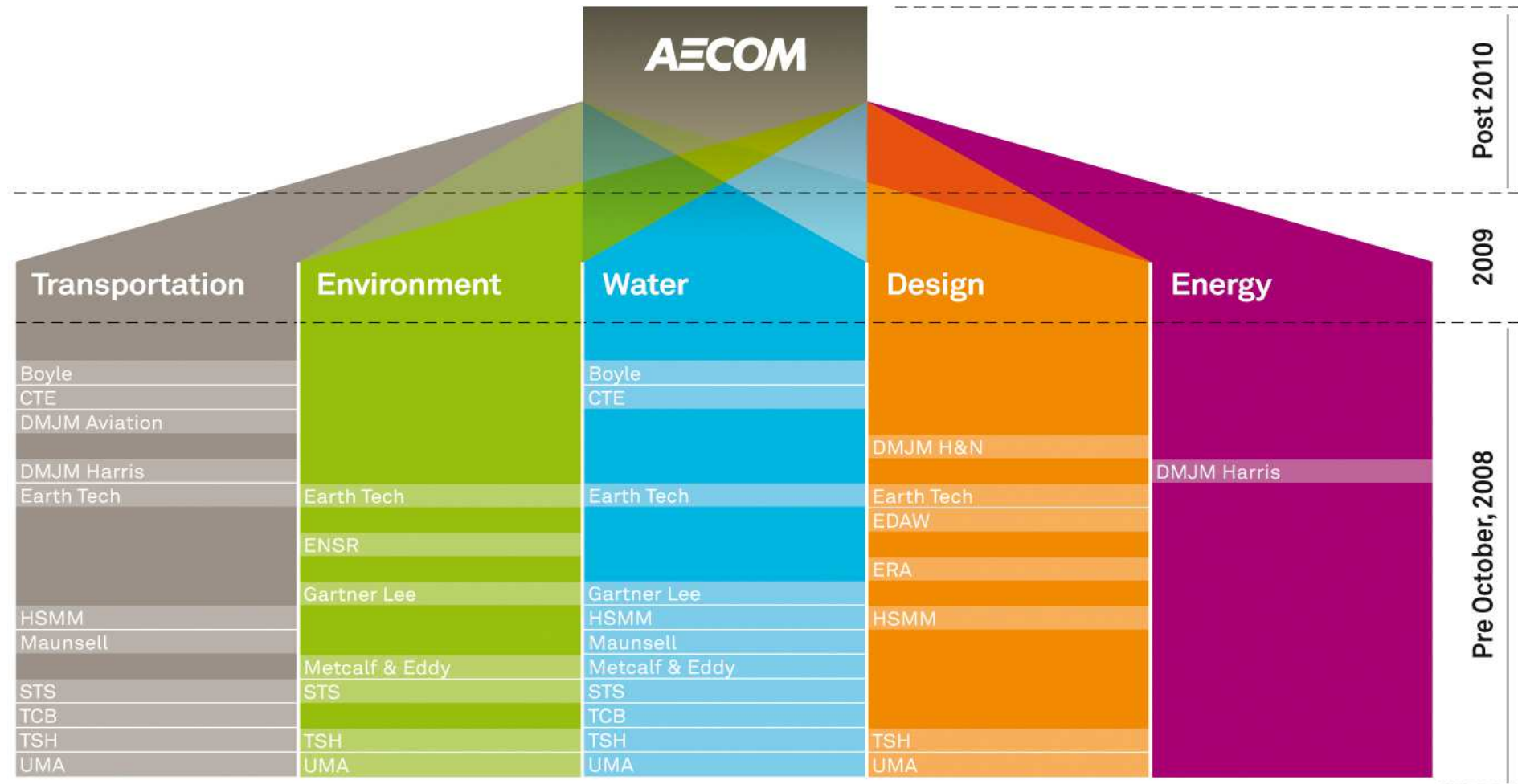


322

2012年度《财富》500强排名

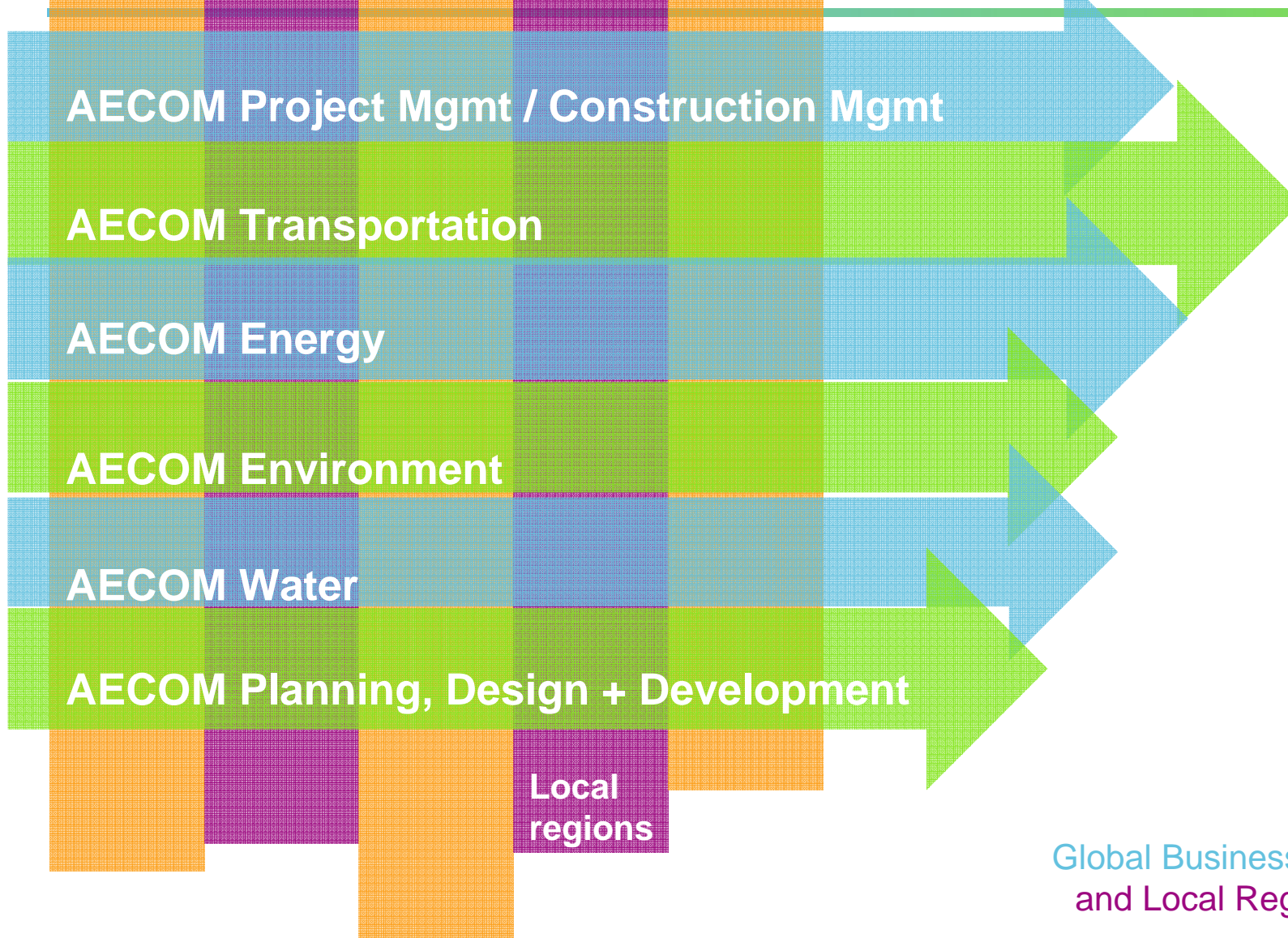
Position within 2012 Fortune 500 list

继承与演变 Heritage and Evolution

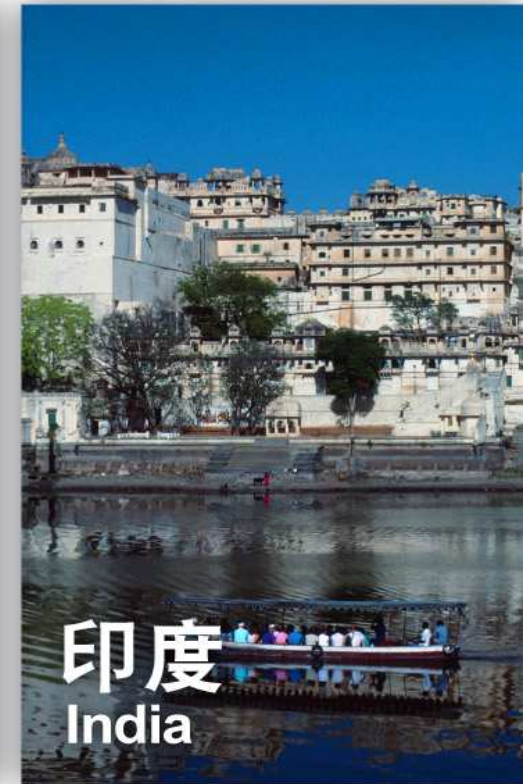


Legacy Companies in HK:
Maunsell, Metcalf & Eddy, EDAW, ENSR, Earth Tech, etc

统一品牌下的矩阵架构 Matrix Under One Brand



Global Business Lines (what we do)
and Local Regions (where we are)



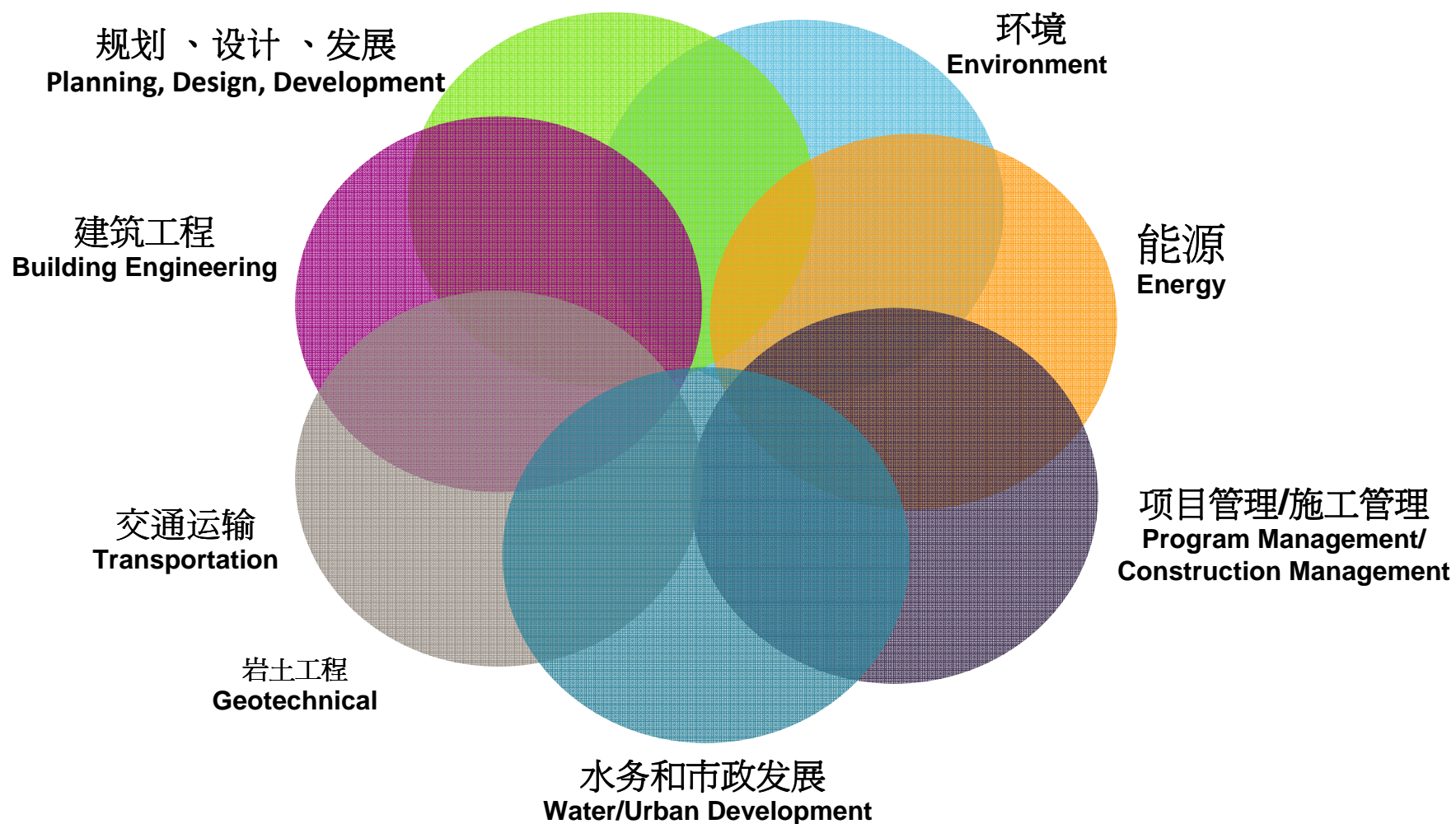
Total number of employees:

Asia = 6,967

HK alone = 3,325

为客户提供一站式综合性专业服务

Integrated, Multi-Disciplinary Services



AECOM's Projects in Hong Kong



Stonecutters Bridge



HK Convention & Exhibition Centre



Harbour Area Treatment Scheme 2A –
Sewage Conveyance System



Central-Wan Chai Bypass and
Island Eastern Corridor Link



Science Park



West Kowloon Terminus



AECOM Core Values

Integrity in everything we do

Safety: in our workplace

Employees: as our most valuable resource

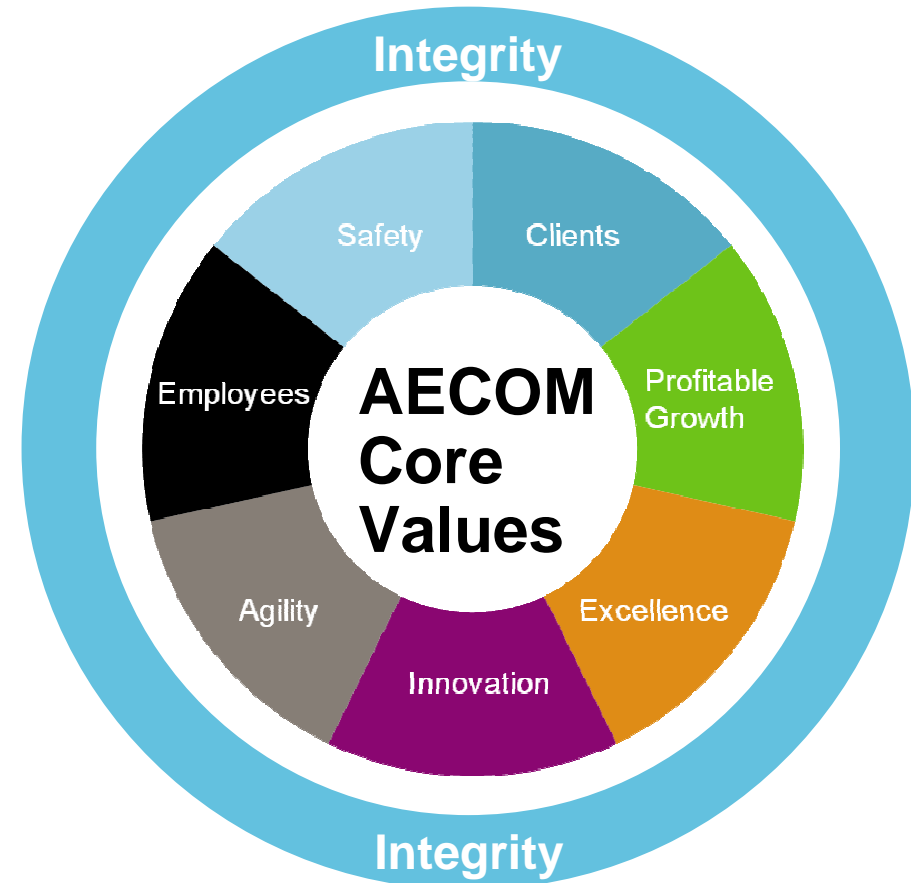
Clients: our success is measured by the success of our clients

Excellence: in all areas of our business and services

Innovation: in all dimensions

Agility: in embracing change

Profitable Growth



Our goals are simple

No injuries or illnesses to our staff

No negative impacts to the environment

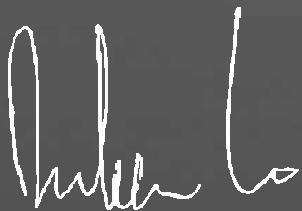
No damage to properties

as a result of our actions

SH&E Booklet – Our Guiding Principles Asia Version (2011)

“As one of our Core Values at AECOM, Safety is embedded in all of our operations. We focus on Safety, Health and Environment (SH&E) and strive to establish a safe and healthy workplace for our employees, coworkers, clients, and to preserve the natural environment in which we live. Regular review of the SH&E program and training of our people are essential for us to conduct business with integrity. We must constantly think of ways that SH&E can be more ingrained in our work culture than it already is.”

“安全是AECOM的核心价值之一，贯穿我们各层运营，并紧密相关。我们关注安全、健康和环境(SH&E)，努力为我们的员工、合作伙伴和客户营造一个安全健康的工作环境，并保护我们赖以生存的自然环境。定期的评估SH&E管理方案，并为员工提供培训是确保我们具备诚信经营能力的关键要素。我们应不断思考，持续提升我们工作的安全文化。”



Dickson Lo 卢迪生

Chief Executive, Asia 亚洲区首席执行官



SAFETY, HEALTH, AND ENVIRONMENTAL GUIDING PRINCIPLES

To help all employees understand and implement the AECOM Safety, Health and Environmental (SH&E) Policy and achieve the vision of our Safety Core Value, AECOM Senior Executives have established the following SH&E Guiding Principles.

Risk Management

We will only undertake activities that we have evaluated thoroughly from an SH&E risk standpoint. Where risks are identified, we will develop and implement appropriate mitigation strategies to reduce the possibility of injuring people, damaging property, or impairing the environment.

Resources

We will provide the necessary human, financial and material resources to implement, maintain and monitor the AECOM SH&E Program.

Leadership

Management will be directly involved in the SH&E program. All supervisors will lead by example and through appropriate decision-making.

Compliance

We will comply with all relevant and applicable rules and regulations pertaining to SH&E issues as well as those voluntary requirements to which we subscribe.

Involvement

All employees will be encouraged to provide continual feedback on the effectiveness of our existing programs and to provide recommendations for the development of new ones that can advance our SH&E program.

Sustainability

We will promote environmental sustainability through the efficient use of energy, conservation of natural resources, and prevention of pollution through reuse, recycling, and reduction whenever practical throughout our company.

Training

We will provide thorough and effective training programs to employees. Our management teams will evaluate the training needs for all projects and only assign competent personnel.

Industry Leaders

We will work with clients, partners, suppliers, competitors and regulators to raise the SH&E standards of our industry.

Work With Others

We will assess the competencies and capabilities of our subcontractors prior to selecting them and hold them accountable to the same high standards we have for AECOM. We will also monitor the implementation of our subcontractors' SH&E programs while they work on our projects.

Performance

We will establish short and long-term performance goals relative to SH&E. We will report regularly on our progress to our employees and other stakeholders.

Assessment

We will routinely assess our programs at corporate, business line, region and individual project levels to enable continual improvement of our programs and systems.

Reporting

Every employee will report any occupational injury, illness, environmental release, near-miss incident and property damage incident in a timely, open and thorough manner. Information gained from this reporting will be used to enhance our ability to prevent future incidents.

12 Guiding Principles

- Risk Management
- Resources
- Leadership
- Compliance
- Involvement
- Sustainability
- Training
- Industry Leaders
- Work With Others
- Performance
- Assessment
- Reporting



Guiding Principles

Leadership

- Role model of SH&E behavior.
- Procedures, trainings, communications.
- Employees see that being involved in the SH&E program is “The AECOM Way.”



Leadership

Visible management commitment and involvement, SH&E collaborates with operations, management models SH&E behavior, safety included in any management site visit.

Guiding Principles

Involvement

- Beyond just commitment – getting involved in SH&E is everyone's responsibility
- Encourage reporting of conditions and behaviors that can impact SH&E performance.
- Track, report and close out all suggestions for improvement.
- Celebrate success.



Guiding Principles

Responsibility

- Both management and working teams have responsibility to ensure safety.
- Should work with SH&E team under SH&E managing framework.



and corrective actions. Management provides feedback on any SH&E issue.

Responsibility & Team Work

Responsibility & Team Work

"Safety is a part of my daily work" at all levels of organization. Cooperation between operations, functions and individual project or work teams. Involvement in the SH&E program is "The AECOM Way".

Guiding Principles

Training

- Training program that meets our business needs
- Management, supervision and staff level courses
- Training adds value to our business and is not a “Compliance Checkbox.”



Guiding Principles

Incident Reporting

- All incidents reported to supervisor, Human Resources and SH&E team.
- Incidents are investigated with the focus on identifying how to prevent recurrence.
- Lessons learned from incidents and investigations are communicated.
- Trends are identified as early as possible.

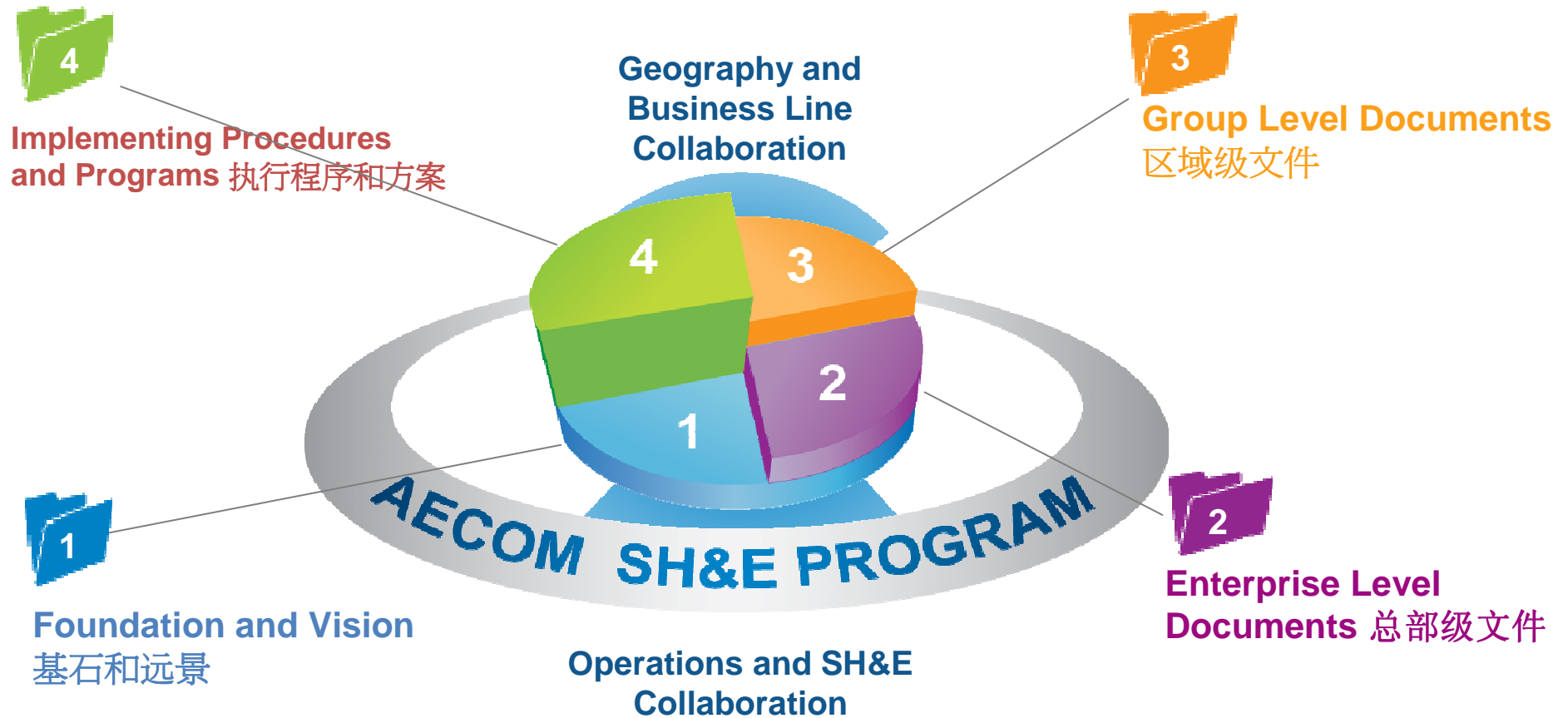
Reporting & Learning

All incidents are reported and investigated to prevent future recurrence and communicate lessons learned. All safety incidents, concerns or near miss events are willingly reported.



Reporting & Learning

Outline of AECOM SH&E Program



How SH&E Program fit into IMS?

Integrated Management System

- 100 series - System Management
- 200 series - Project Delivery
- 300 series - Risk Management
- 400 series - Environment
- 500 series - Human Resources, Learning & Development
- 600 series - Information Technology
- 700 series - OH & S
- 800 series - Finance
- 850 series - Marketing / Business Development
- 900 series - Administration

Tier I

- Enterprise Level

Tier II

- Global Level

Tier III

- Geography Level; mandatory

Tier IV

- Local or client driven; not mandatory

Safety IMS Documents, Asia 亚洲区安全IMS文件

S3AS-000 - SH&E Essentials SH&E关键要素

S3AS-100 - Office based SH&E
(SH&E elements joint-work with Admin)
办公室SH&E (与行政协作)

S3AS-200 - Employee based SH&E
(SH&E elements joint-work with HR)
以人为核心的SH&E要素(与HR协作)

S3AS-300 - Project Management
(SH&E elements joint-work with QA)
项目管理(与QA协作)

S3AS-400 - Field 工地、现场
(SOPs on Risk/Hazard control)
风险与危害控制SOPs

S3AS-500 - SH&E Program Management
SH&E 程序管理

Asia SH&E Website at MyAECOM



[About](#) [AECOM Corporate](#) [Business Lines](#) [Geographies](#) [Government Sector](#) [Quick Links](#)



[Geographies](#) > [Asia](#) > [Safety, Health and Environment](#)

Safety, Health and Environment

Asia

Functions

- [Administration](#) (+)
- [Business Development](#)
- [Marketing and Communications](#)
- [Finance & Accounting](#) (+)
- [Human Resources](#) (+)
- [Information Technology](#) (+)
- [Legal & Compliance](#)
- [Office of Risk Management - Asia](#)
- [Project Delivery](#) (+)
- [Quality & Risk](#)
- [Safety, Health and Environment](#)
- [Office of Corporate Sustainability](#) (+)
- [Thought Leadership and Awards](#)
- [Corporate Social Responsibility](#) (+)
- [Travel](#) (+)

Business Lines

- [Building Engineering](#)
- [Energy](#)
- [Infrastructure](#)
- [Manufacturing](#)
- [Process Engineering](#)
- [Transportation](#)

[Safety Procedures & Forms](#)

[Safety & Health Training and Learning Materials](#)

[Office Safety, Health and Environment](#)

[Talk Safety Our Construction Site & People](#)

Welcome to Safety, Health and Environment (SH&E) website. Safety is one of our Core Values at AECOM. Our management is committed to the following goals:

- - No injuries or illnesses to our staff.
- - No negative impacts to the environment from our operations.
- - No damage to property as the results of our actions.

Latest News



Improving China's Rail Safety: Qingdao-Rongcheng High-Speed Rail

Around 100 participants joined an AECOM rail safety and quality training session at the offices of the Qingdao-Rongcheng High-Speed Rail Project.

Contacts

- [Alex Leong](#) - Director, SH&E, Asia
- [Helen Hu](#) - Manager, SH&E, Asia
- [Regional champions](#)

Policy

- [12 Guiding Principles](#)
- [SH&E Policy](#)

Helpful links

- [PPE Application](#)
- [SH&E Authority Agency Link \(Country\)](#)
- [SH&E Incident Report](#)
- [Safety Procedures and Guides](#)
- [Travel advisory](#)

FY12 Focus - Project site safety

- Project sites are higher risk types of workplace
- Assess potential safety hazards before start work, mitigate, communicate
- Devise emergency plan
- Ensure all site staffs are trained
- Provide all necessary PPE

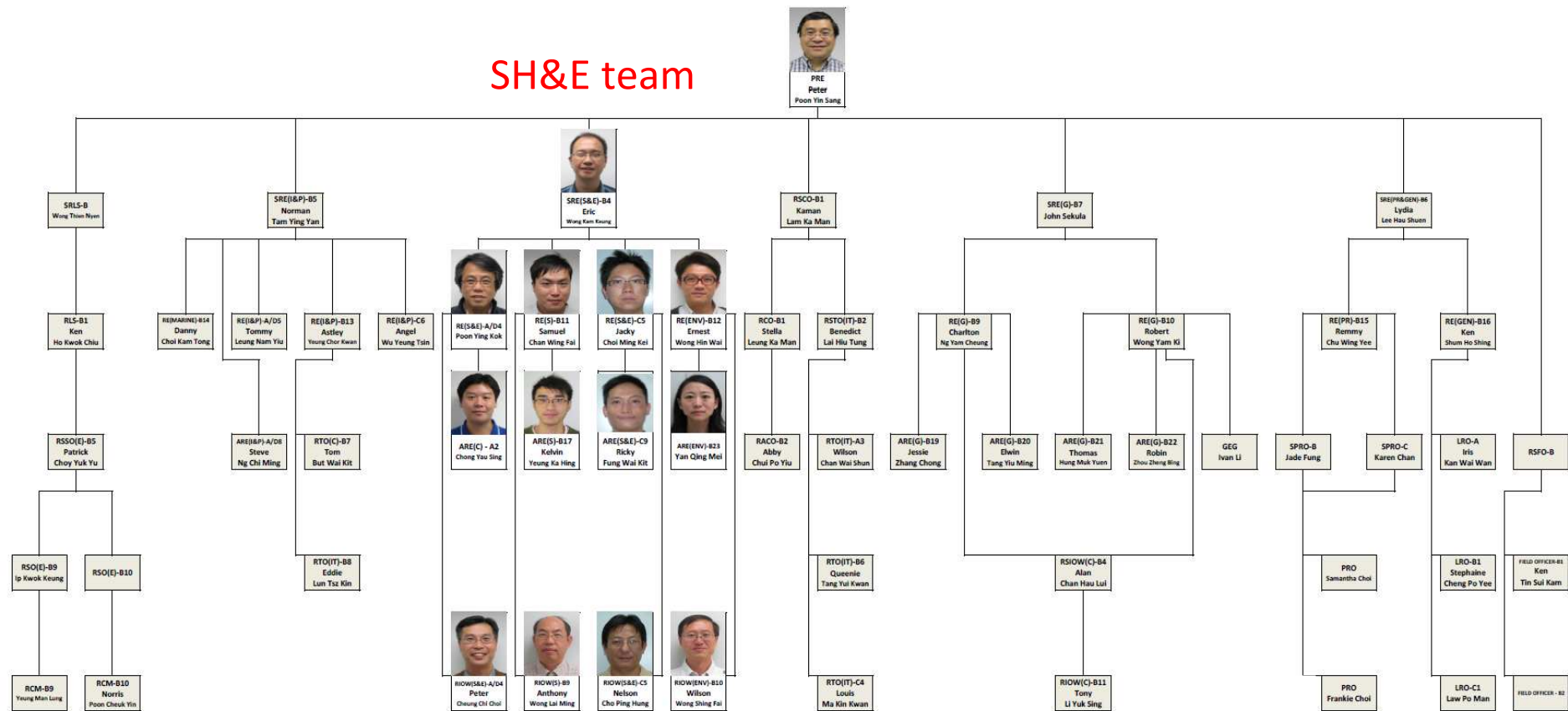


Projects:

- **Harbour Area Treatment Scheme Stage 2A (HATS)**
- **Central – Wan Chai Bypass and Island Eastern**

Functional Group – RSS Organization Chart

In CWB Project:



Safety Promotion through Recognition Campaigns and Awards

Considerate Contractors Site Award Scheme 2010



Among the 19 public work sites receiving the awards under New Works category, 8 of them are being supervised by AECOM

Project	CCSA- New Works 公德地盤新 新築工程	OEMPA 標出環境 管理處
Central – Wan Chai Bypass, North Point Reclamation 中環 – 灣仔繞道, 北角填海	Merit	Merit
Design and Construction of Lai Chi Kok Transfer Scheme 荔枝角雨水排放搬遷工程	Bronze	Merit
Formation and Engineering Infrastructure Works for Cheung Shue Tan, Tai Po Mei and Adjacent Areas 樟樹灘、大埔尾及鄰近地區土地開拓及基建建設工程	Merit	Silver
Harbour Area Treatment Scheme Stage 2A – Construction of Sewage Conveyance System from North Point to Stonecutters Island 淨化海港計劃第二期中 – 北角至昂船洲污水輸送系統建造工程	Merit	Merit
Harbour Area Treatment Scheme Stage 2A – Construction of Sewage Conveyance System from Aberdeen to Sai Ying Pun 淨化海港計劃第二期中 – 香港仔至西貢觀瀾污水輸送系統建造工程	Merit	Merit
Reconstruction and Improvement of Tuen Mun Road – Tai Lam Section 屯門公路重建及改善工程 – 大欖段	Silver	Silver
Reconstruction and Improvement of Tuen Mun Road – Sam Shing Hui Section 屯門公路重建及改善工程 – 三聖墟段	Merit	Bronze
Roads, Drainage and Sewerage Works at Whitehead and Lok Wo Sha Phase I 白石及落禾沙第一階段道路及渠務工程	Merit	-

DSD Housekeeping Award Scheme 2010




HATS Project won DSD's the Best Housekeeping Award



3 other projects won the Merit Awards

Safety Promotion through Recognition Campaigns and Awards



Labour Department

Your reference 來函編號 :
Our reference 本處檔案編號 : SSD/CAM/MIS/468-civil-102
Tel. Number 電話號碼 : 2852 4969
Fax number 傳真號碼 : 2541 9952

David LAU
China State Construction Engineering (HK) Limited
Central - Wan Chai Bypass - Tunnel (Causeway Bay) Typhoon, Shelter Section
(Fax No.: 2566 2192)

15 February 2012


Dear Sir / Madam,

Construction Industry Safety Award Scheme 2011/2012
Enrolled site: Central - Wan Chai Bypass - Tunnel (Causeway Bay) Typhoon, Shelter Section

Thank you very much for supporting the captioned Award Scheme by entering your above site for the site safety competition. I am pleased to inform you that your site has been selected for the **Gold Prize in the Civil Engineering Sites category** of the competition.

勞工處

The Award
Southern Stadium
2:30p.m. A Full



Labour Department

Your reference 來函編號 :
Our reference 本處檔案編號 : SSD/CAM/MIS/468-icam-65(102)
Tel. Number 電話號碼 : 2852 4969
Fax number 傳真號碼 : 2541 9952

David LAU
China State Construction Engineering (HK) Limited
No. 111, Hing Fat Street, Causeway Bay, Hong Kong
(Fax No.: 2566 2192)

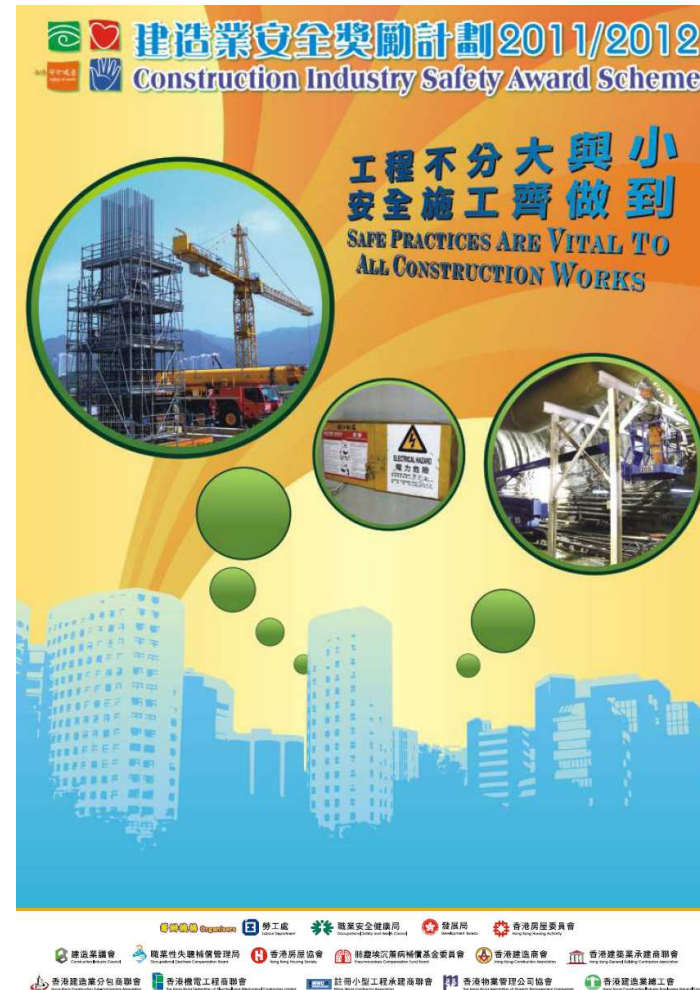
15 February 2012

Dear Sir / Madam,

Construction Industry Safety Award Scheme 2011/2012
Enrolled site: No. 111, Hing Fat Street, Causeway Bay, Hong Kong

Thank you very much for supporting the captioned Award Scheme by entering your above site for the site safety competition. I am pleased to inform you that your site has been selected for the **Meritorious Prize in the Safety teams category** of the competition.

勞工處



One of the Contracts of CWB Project won the Gold Prize in Civil Engineering Sites category, and Meritorious Prize in the Safety teams category of the competition

Safety Promotion



HATS site selected by OSHC and TVB for Video shooting of “Safe and Healthy Workplace”



Major Infrastructure OSH campaign - Outreaching Show at HATS site by DevB and RTHK

“Strive for LIFE” Baisan & Safety Commitment Charter in HATS Project



Safety Promotion



“Strive for LIFE” – Baisan and Safety Commitment Charter in CWB Project



Joint Safety Seminar with Contractors about Safety Measures for Diaphragm Wall Construction in CWB Project



仲夏彩虹安全約章
(CWB Project)



Safety Promotion



Safety Training by CRE for RSS and contractor staff in CWB Project



Inviting PCFB to conduct a talk on "Pneumoconiosis and its Prevention" for RSS and contractor staff in CWB Project



Training on the use of safety harness for RSS

Promoting Client Involvement in Safety Issues



Safety Forum with Client and Contractors in HATS Project



Risk Management Workshop with Client and Contractor during construction stage

Promoting Client Involvement in Safety Issues



Joint Safety Charter
with Client and
Contractors in CWB
Project

Participation in Safety Committee Meetings

Safety Inspection and Safety Meeting



Senior members of AECOM RSS and the Contractors participated in safety inspections, safety meetings and review meetings on near misses/incidents.

Proprietary and Confidential



Performance and Involvement in Safety Audit

In CWB Project:

- ❖ No observations were found during the half-yearly Technical Audits by HyD
- ❖ Regular conduct of safety audits using HyD's audit checklists
- ❖ Review of Contractors' safety performance using DevB's Score Card System
- ❖ Regular participations in Contractors' safety audit activities

Tong Cheuk Wah (RSA/384) Tel: 91843331 Fax: 27566646

6. Audit Log

6.2 An opening meeting and closing meeting were held with Contractor's representative before and at the end of the audit. Attendance was as follows:

Name	Position	Opening Meeting	Closing Meeting
Mr. Samuel Chan	AECOM / RE		✓
Mr. Hua Rong Qing	Site Manager	✓	✓
Mr. David Lau	Site Agent	✓	✓
Mr. Gene Cheung	Construction Manager	✓	
Mr. K S Poon	Safety Manager	✓	✓
Mr. Brian Cheung	Safety Officer	✓	✓
Mr. Kurt Kwan	Safety Officer	✓	✓
Mr. Fung Siu Pong	Assistant Safety Officer	✓	✓

Participating in Safety Audit required under F&IU(SM)R



Checking the compliances for statutory requirements

Checklist for safety measures of site vehicles (CIC Guideline No. 3)

1. Contract No.:	HY/2009/15		
2. Contract Title:	Central-Wan Chai Bypass – Tunnel (Causeway Bay Typhoon Shelter Section)		
3. Contractor:	China State Construction Engineering (Hong Kong) Ltd. (CSHK)		
4. Audit Team:	AECOM Asia Co. Ltd (AECOM)		
5. In Attendance	Mr. Kelvin Yeung) AECOM - ARE Mr. Brian Cheung) CSHK – Safety Officer Mr. Kurt Kwan) CSHK – Safety Officer		
6. Date of Audit:	4 August 2011 – Physical Site Conditions 6 August 2011 – Management System		
7. Audit Findings:	The management system of safety measures for site vehicles and mobile plant as well as its physical site conditions were found generally acceptable. However, there were rooms for improvement on sub-item 1.1 of Item 7.1 and sub-item 1 to 4 of Item 7.2 in order to enhance the site traffic safety and to ensure full compliance with the requirement set out in Construction Industry Council's (CIC) Publication No. 3 – Guideline on Safety of Site Vehicles and Mobile Plant.		

7.1 Management System

Implementation of site safety measures for site vehicles and mobile plant		Compliance	Remarks/ Recommendations
Section 1 : Training			
I.1	Tool box talks once per quarter per driver, operator and banksman	Partially Complied	For the period May 2011 to July 2011 <ul style="list-style-type: none">18 nos. tool box talks and special trainings on site traffic safety were conducted for site personnel.Total of 129 attendees for tool box talks on site traffic safety for (average) 173 employees; Average of 0.75 talk/person provided during the 3-month period. (Refer to Appendix A)

Auditing on site vehicles based on CIC guidelines

Design for Safety

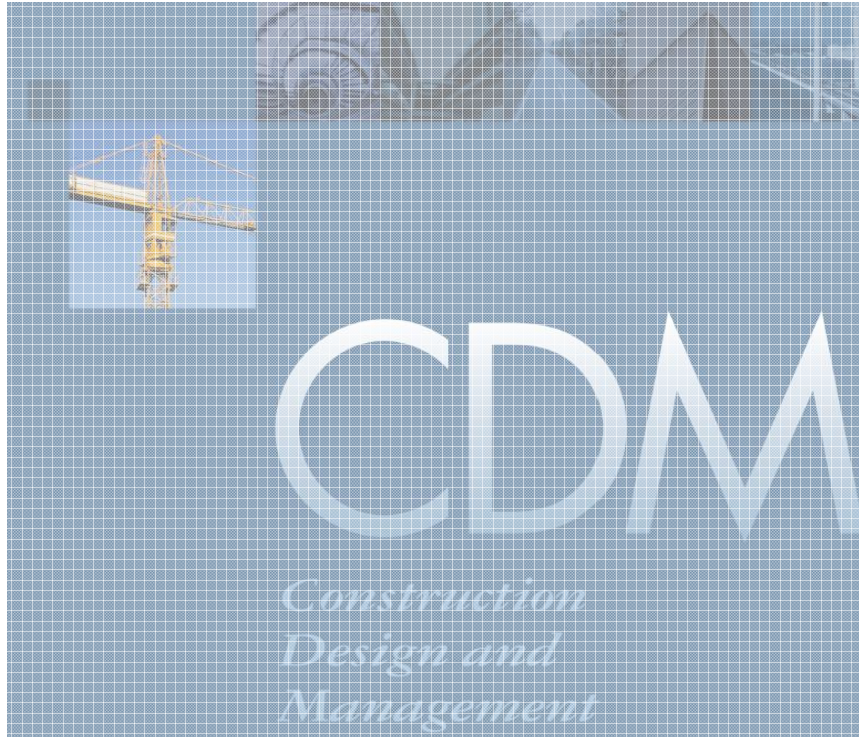
In HATS Project:

- A comprehensive site investigation programme at planning/design stage including Horizontal Directional Coring
- Drill & Blast Tunnel was recommended:
 - Pre-excavation grouting at tunnel face – control the water inflows into the tunnels to limit ground settlement during construction
 - More flexible for excavation – extensive grouting and ground support in difficult ground conditions
 - Eliminate the risk of TBM jammed at the tunnel face
- Contract Form with Re-measurement of Major Works Items was recommended: drilling of probe holes, pre-excavation grouting, shotcreting, rock bolts and steel ribs etc.

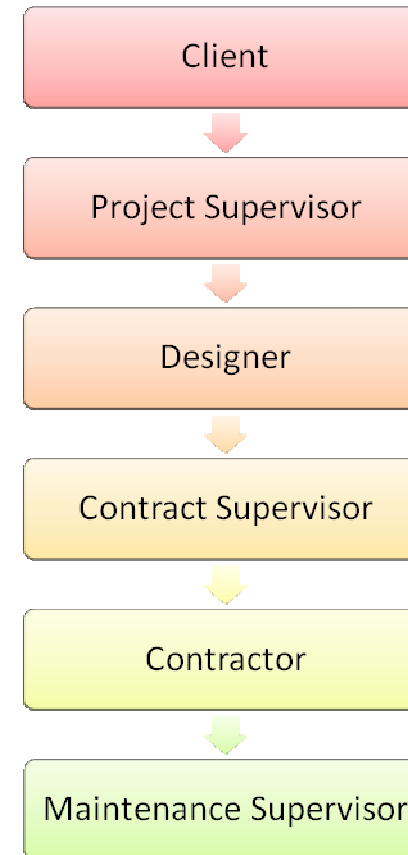


Design for Safety

In CWB Project:



Implementation of Construction Design and Management (CDM)



Duty-holders in CDM Process

Design for Safety

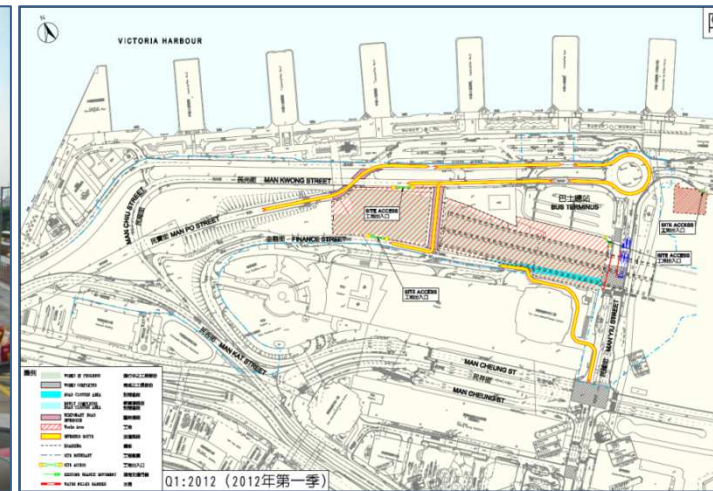
Health and Safety File Hazard Impact Summary (Example)

CDM

	Task	Hazards and Impacts	Likelihood	Consequence	Risk Assessment Rating	Control Measure	Hazard Resolved	Necessity to Notify Contractor	Other Relevant Parties to be Notified
1	Pedestrian and Vehicular Traffic during construction	Workers' safety and public safety	Medium	Medium to High	Medium to High	Specify the requirements such as erection of hoarding and provision of alternative routes during construction	No	Yes	TD, RMO, public transport operators, rescue departments & nearby stakeholders
2	Drinking Water	Shortage of drinking water to workers, leading to heat stroke	Low	Medium to High	Medium to High	The Contract will specify the requirement of drinking water supply	No	Yes	N/A

During construction stage

- Hoardings were erected to fence off the site
- Alternative routes were provided



Partnering with Contractors during Project Design Stage



A Contractor Forum was conducted in HATS Project to exchange opinions with the contractors before finalization of the contract form and payment mechanism prior to the Pre-qualification Exercise

Pre-fabrication, Pre-finishing of Component Parts to Minimise Site Construction Time, Improve Safety & Quality



Pre-fabrication of Steel Works at Lau Fau Shan, Hong Kong for ELS Works in CWB Project



Pre-casting of Concrete u-channel, and caisson seawalls with protective coatings at Pan Yu, China for CWB Project

Ease and Simplicity of Fabrication, Transport and Installation of Component Parts



Delivery of concrete blocks for hoardings by barge in CWB Project to minimise the impact to road transportation system



Installation of steel weights on walls of Cross Harbour Tunnel after midnight in CWB Project to minimise disturbance and reduce the risk to road users

Requirement for Contractors to Implement Safety Incentive Scheme and Safe Working Cycle



PS Clause 1.69A **Site Safety Cycle**

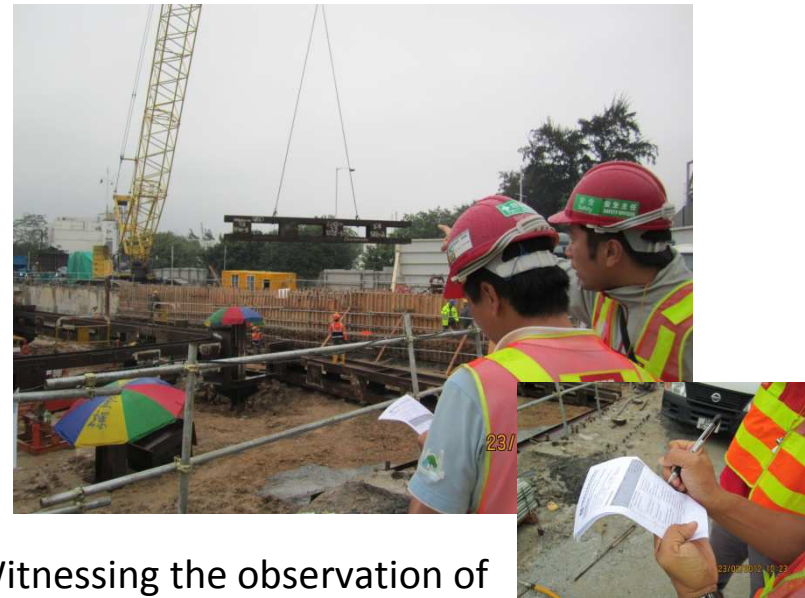
The Contractor shall practice "Site Safety Cycle" (SSC) to improve and promote the safety and health of the Site. Site Safety Cycle shall begin when there are workers working on the Site ... The activities for Site Safety Cycle for one day, one week and one month are referred to as the "Daily Cycle", "Weekly Cycle" and "Monthly Cycle" respectively. ...

PS Clause 1.143(1) **Behaviour Advancement Programme (BAP)**

Throughout the Contract period, the Contractor shall carry out BAP. A BAP consists of the following elements.
(a) Observations of the workers' behaviour for one selected critical activity;
(b) Provisions of improvement measures during the course of observation periods; and
(c) Reporting, concluding performance results and drawing recommendations.



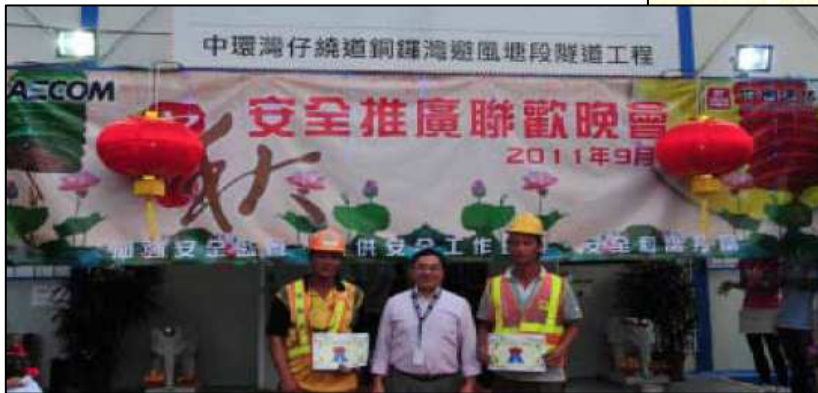
Joint Pre-work Exercise and Hazard Identification Activity with Contractor in CWB Project



Witnessing the observation of mechanical lifting in BAP in CWB Project

Contractual Provisions for Rewarding Good Safety Effort and Performance

In CWB Project:



Certificate of Award


This certificate is awarded to

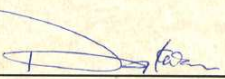
Mr. Tung Ping Po

*under the Safety Model Workers Award Scheme for
Highways Department*

*Contract No. HY/2009/18 – Central–Wan Chai Bypass
Central Interchange*

*in appreciation of his good safety performance
during the period
from 1 July 2011 to 31 July 2011*


Mr. Desmond Sze
Deputy Site Agent
Leighton Contractors (Asia) Ltd.


Mr. David Kwan
Engineer's Representative
AECOM Asia Co. Ltd.



Safety Model Workers Award

Inclusion of “Pay-for-Safety”
scheme in Contract documents

Assessing Tenderers' Past Safety Performance

RESTRICTED (TENDER)

Contract No. HY/2009/15

Central Wan Chai Bypass - Tunnel (Causeway Bay Typhoon Shelter Section)

TENDER ASSESSMENT - TECHNICAL EVALUATION

Section (2) (c) Tenderer's Past Performance - Accident Rate

Name of Tenderer:

	Non-fatal Accident Rate, per 100,000 man-hours worked			DEVB Accident Rate Target since April 05	Maximum Mark	Mark of sub-section
	18-Apr-10	18-Apr-09	17-Apr-08			
2 (c) Accident Rates					2.5	
Sub-total mark for Section (2) (c)						

Marking Standard

2.5 mark: If all three accident rates do not exceed the DEVB target

1.7 mark: If 1 accident rate exceeds the DEVB target

0.9 mark: If 2 accident rates exceeds the DEVB target

0 mark: If all three accident rates exceed the DEVB target

Parts of the Assessment Sheet concerning the past safety performance of the Tenderers in CWB Project

TENDER ASSESSMENT - TECHNICAL EVALUATION

Section (2) (g) - Record against convictions under the Immigration Ordinance, Employment Ordinance or other site safety, environment related and road opening offences (From 19/04/2007 to 18/04/2010)

Name of Tenderer:

			Judgement Date	
			CMIS	Non CMIS
1	No. of convictions under the Immigration Ordinance			
2	No. of convictions under the Employment Ordinance			
3	No. of convictions under the Factories and Industrial Undertakings Ordinance			
4	No. of convictions under Section 27 of the Public Health and Municipal Services			
5	No. of convictions under the Anti-Pollution Legislation			
Sub-total				
6	No. of convictions under Environmental Impact Assessment Ordinance			
7	No. of convictions under Lands (Miscellaneous Provisions) Ordinance ¹			
Total no. of convictions in the past 3 years period ²				
No. of ongoing and completed construction contracts (CMIS) ³				
No. of ongoing and completed construction contracts (non-CMIS) ³				
Total No. of ongoing and completed construction contracts ³				
Factor				
Sub-total mark for Section (2) (g)				

Accident Statistics

In CWB Project:

	HY/2009/16	HY/2009/15	HY/2009/18	HY/2009/19	HY/2009/17	HY/2009/11
Contract Sum (HKD)	51M	5377M	1272M	4020M	183M	303M
Cumulative No. of Reportable Accidents	0	0	0	1	0	0
Total Man-hours Worked (up to contract completion, or end January 2012 for ongoing contracts)	20,110	996,876	448,535	435,564	230,143	325,880
Cumulative Accident Frequency Rate	0.041 per 100,000 man-hours					

The cumulative accident frequency rate is far below DevB's target limit of 0.6!

An aerial night photograph of the Hong Kong skyline, featuring numerous illuminated skyscrapers and a harbor with lights reflecting on the water. The background shows dark mountains under a night sky.

Together, We can achieve Zero Accident!

Thank You!

About AECOM
Global Reach, Endless Possibilities

AECOM