



Safety Leadership and Smart Site Safety System

Norman L.M. CHAN
General Manager (Projects)
The Hongkong Electric Co., Ltd.

HK Electric: Powering Hong Kong

December 2024

One of the world's oldest power companies

- Powering homes and businesses of Hong Kong since 1890 - entering our 135th year of operation in 2025.

A vertically integrated power company

- The Company's operations cover power generation, transmission & distribution and customer services.

Powering Hong Kong's prosperity and stability

- Provides electricity to over 590,000 customers on Hong Kong Island and Lamma Island.
- Supplies Hong Kong's core political and economic areas.

Providing world-class supply reliability

- Achieved a world-class power supply reliability rating of 99.999% for more than a quarter of a century.
- Over 99.9999% in 2024 which is equivalent to less than 0.5-min unplanned power interruption per customer in a year.



Installed
Capacity

3,083 MW

Circuit Length



7,047 km



Number of
Customers

>590,000

Safety Leadership - Responsibility

- What is “Safety Responsibility” ?
- Why is Safety more than just adhering to rules ?

**Safety isn't just compliance;
it's a shared act of care.**



Safety Leadership – Our Core Values

- **Leadership** means **Safety** is led from **Top Management**
- HK Electric's **Health & Safety** practices embody our “**4 core values**”



Our Vision and Mission in Safety Leadership

- **Excel** in occupational health and safety performance
- **Achieve** an accident-free operation in a proactive and caring manner
- **Committed** to protecting the health and safety of our employees, customers, contractors and the public by conducting our business in a safe and socially responsible manner.
- **Comply** fully with all applicable laws and regulations and strive to integrate health and safety considerations into all aspects of our business activities.

Safety Leadership

➤ Top Management Commitment – H&S Forum, SHE Day, Life First Campaign



Safety Leadership

➤ Full Resources of Kindness and Love



Safety Leadership

- Safety Initiatives – EMSD Safety Conference, Innovation Expo



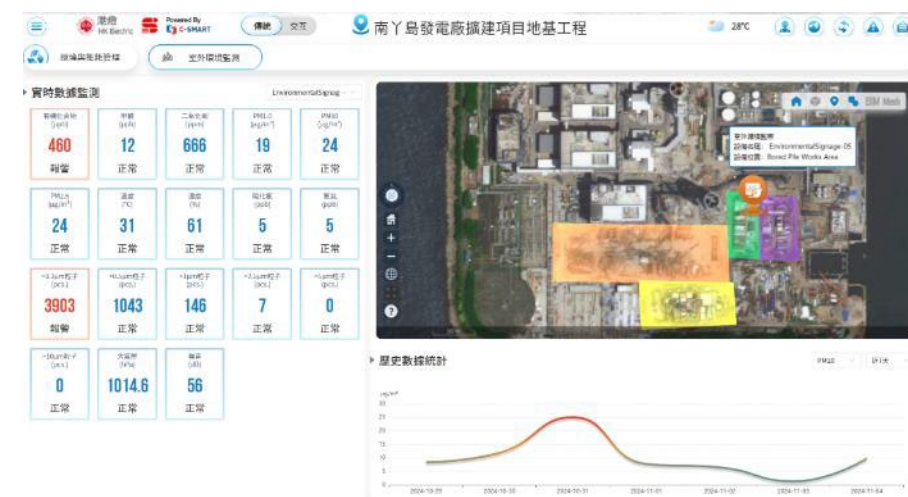
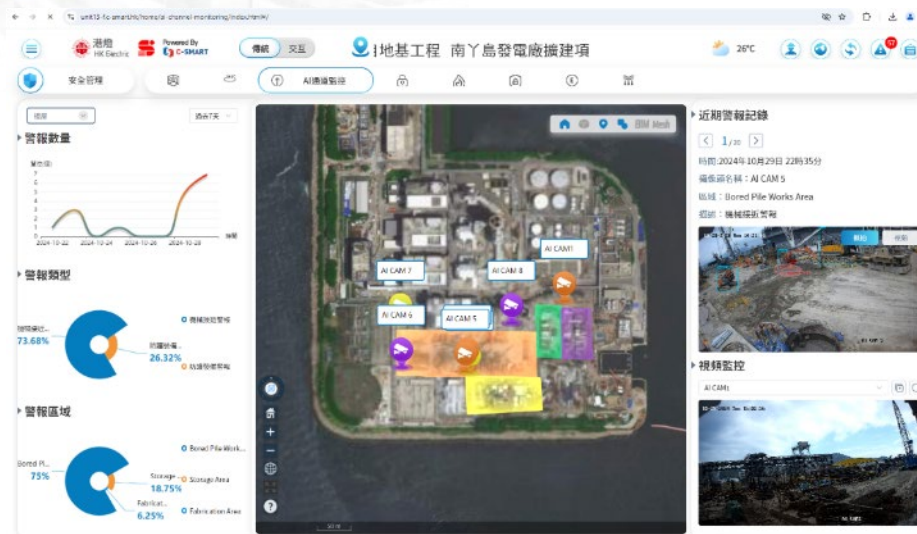
➤ Contractor Management

- Enjoyment with ALL
- Brochure
- Contractors involvement
- Dispatch SHE Messages



Smart Site Safety System (4S)

- 4S is adopted in our major construction projects
- CIC – Smart Site Safety System Labelling Scheme



Smart Site Safety System (4S)

✓ Implementation of “4S”

Since 2023, HK Electric has collaboration with “4S” vendors to further enhance the safety systems in our projects. To date, six projects have implemented the “4S”.

✓ Benefits of “4S”

- Real-time Monitoring and Alerts to prevent accidents and injuries
- Proactive Hazard Identification
- Long-term data insights to identify risk patterns
- Enhanced Company Reputation



Smart Site Safety System (4S)

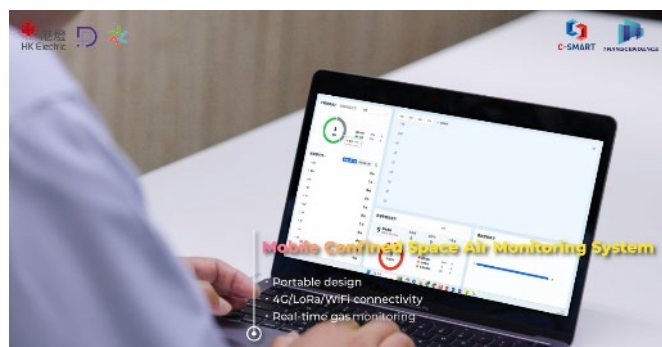
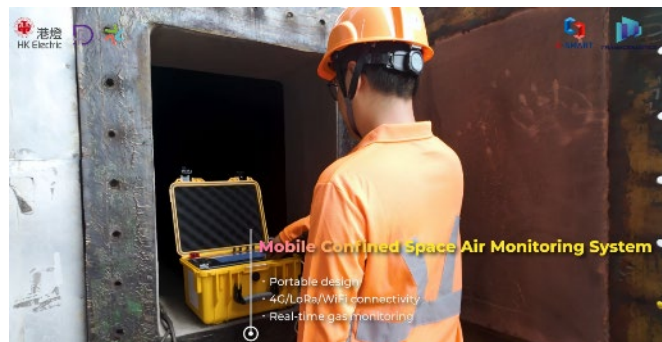
Innovating Beyond Boundaries

We collaborated with “4S” vendors to develop 4S Infinity solutions – an advanced suite of six innovative safety products.

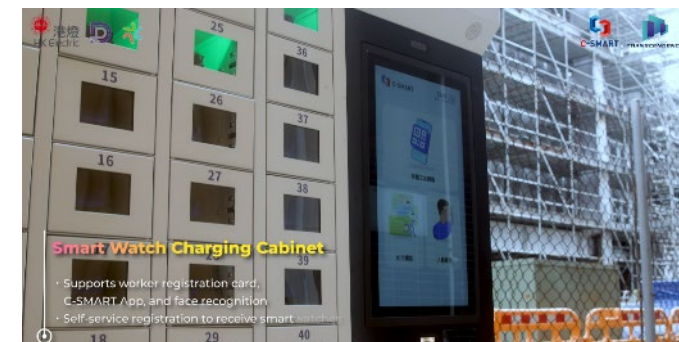
1. Danger Zone Safety Cover Plate



2. Mobile Confined Space Air Monitoring System



3. Smart Watch Charging Cabinet



Smart Site Safety System (4S)

Innovating Beyond Boundaries

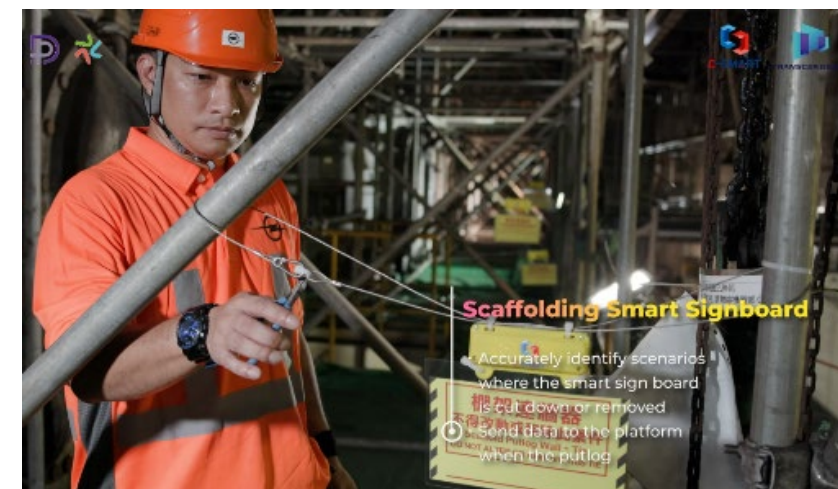
4. Mobile Plant Management System



5. 3-in-1 Smart Helmet



6. Metal Scaffolding Digital Sensor



Case Studies and Continuous Improvement

- Regular Safety Meetings to review fatal and serious accidents in HK
- Benchmarking safety performance & prevent similar accidents in our workplaces.



Collapse of a bamboo scaffolding in HK
Courtesy of Mingpao News, 13 Jan 2025



Trial run of digital sensors on scaffoldings at Lamma Power Station (LPS) of HK Electric to enhance scaffolding safety



建造業安全訊息
第 33 / 24 號



東涌工地一工人被夾於動力操作 升降工作台與橫樑之間

2024年11月22日，一名工人於東涌一工地的動力操作升降工作台（升降台）上工作期間，被夾於升降台與橫樑之間，送院搶救後證實不治。建造業議會就此向各持份者發放以下安全訊息，煩請閣下在合適情況下，將以下安全訊息轉發給貴會會員／機構相關人員或業界其他持份者，謝謝。

Safety Alert - Strike to death by MEWP
Courtesy of CIC, 22 Nov 2024



Mandatory Application of Secondary Guarding Device for
Mobile Elevated Working Platforms at LPS

職安警示

被夾於挖土機及泥頭車之間

1. 意外日期： 2024 年 7 月
2. 意外地點： 一個建築地盤
3. 意外摘要：

一名泥頭車司機被夾斃於一部泥頭車車尾及正在轉動中的挖土機的機背之間。

Safety Alert - Strike to death by excavator
Courtesy of LD, Jul 2024



Mandatory application of Mobile Plant
Alert System at LPS

Safety Innovation

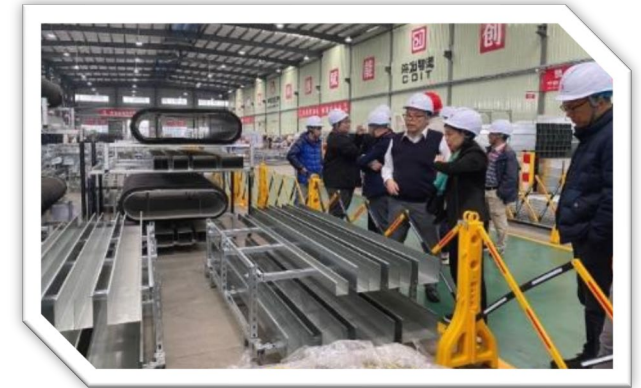
Design for Safety (Dfs) – CIC Pilot Run – Two Projects

- a) Substation Building Project, Phase 1
- b) L13 Gas Receiving Station Project, Phase 2

Project Sharing Presentation for Phase 1



Safety Culture Exchange



Awards and Recognitions



Reflections and Takeaways

1. Safety Starts with Attitude
2. Leadership Turns Policy into Culture
3. Smart Systems Strengthen Our Responsibility
4. Foresight Creates Safer Work Environment
5. Exchanging Safety Culture Fuels Progress
6. Achievement is Recognition Through Practice.



Thank you