



CONSTRUCTION
INDUSTRY COUNCIL
建造業議會

Blaxtair AI監察系統 Blaxtair AI cameras

香港寶嘉建築有限公司

Dragages Hong Kong Limited

Blextair AI Camera



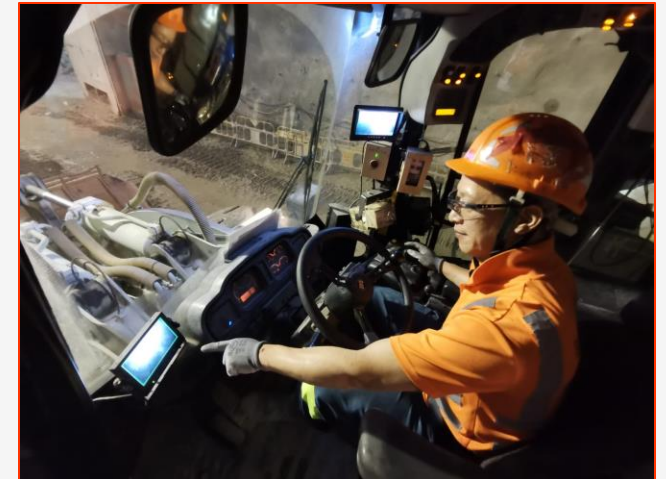
People-Plant Segregation

- Proper people-plant segregation is one of the **12 Health and Safety Basics** of the Company
- This is achieved through a combination of rules and procedures (Traffic Management Plan), site access control, physical barriers, provision of pedestrian crossings, raising workers' awareness and **safety technologies**.
- One of the safety devices used is **Blaxtair AI camera**.



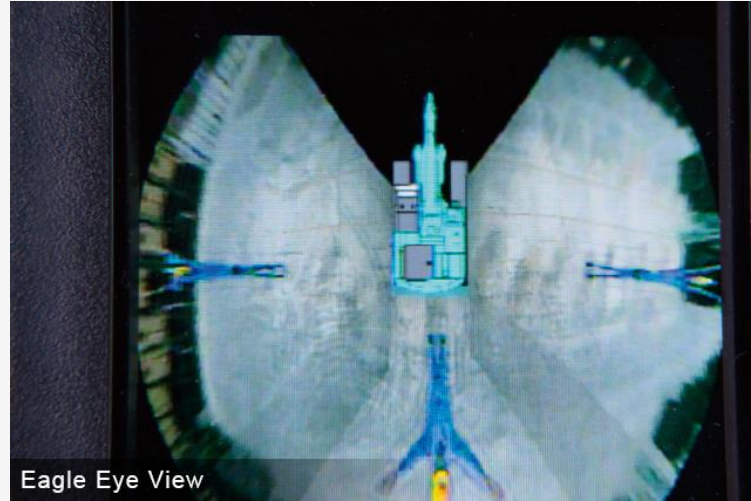
Blaxtair

- 1 Installed in construction plant with frequent forward and reverse movements including **wheeled loaders, dumpers and tele-handlers**
- 2 Gives audio and visual alarm to the operator when a person was within the **7m detection zone**
- 3 Simple, durable and reliable device for operations in **tunnel environment** with little maintenance
- 4 Have been using the device since **2015**



Similar Devices in the Market

1 360 Degree Cameras



2 Ultra Wide Band Anti-Collision System



3 Danger Zone Alert System



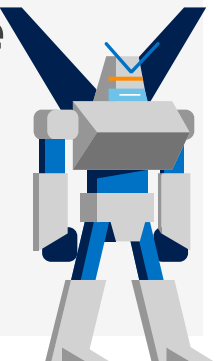
Other Considerations



It would be best if the alarm can be sent to both the operator and the person who has intruded into the danger zone.

There have been thoughts of auto-braking system but it does not work in the confined tunnel environment, with frequent braking and other induced hazards caused by sudden braking.

Safety technology is there to help but by no means taking away the fundamental and conventional measures of workers' protection.



Thank You