



CONSTRUCTION  
INDUSTRY COUNCIL  
建造業議會

# Blaxtair AI監察系統 Blaxtair AI cameras

易新科技有限公司

E-Business Solutions Limited

# PEDESTRIAN PROXIMITY DETECTION SYSTEM FOR CONSTRUCTION SAFETY



BLAXTAIR®



## Birth of Arcure

**French high-tech company founded in 2009  
in partnership with the CEA & the INRS.**

- **CEA:** Largest and most innovative French Fab (743 patents in 2016)
- **INRS:** French National Research and Safety Institute



ARCURE





## Blaxtair 3 main components



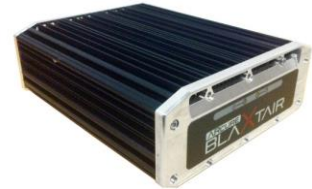
① **Blaxtair captures 3D images:**

The stereoscopic camera looks after the area within its field of view, especially in the vehicle's blind spots.



② **Blaxtair detects:**

The processing unit analyses the captured images, recognises and localises people in real time, thanks to artificial intelligence algorithms.



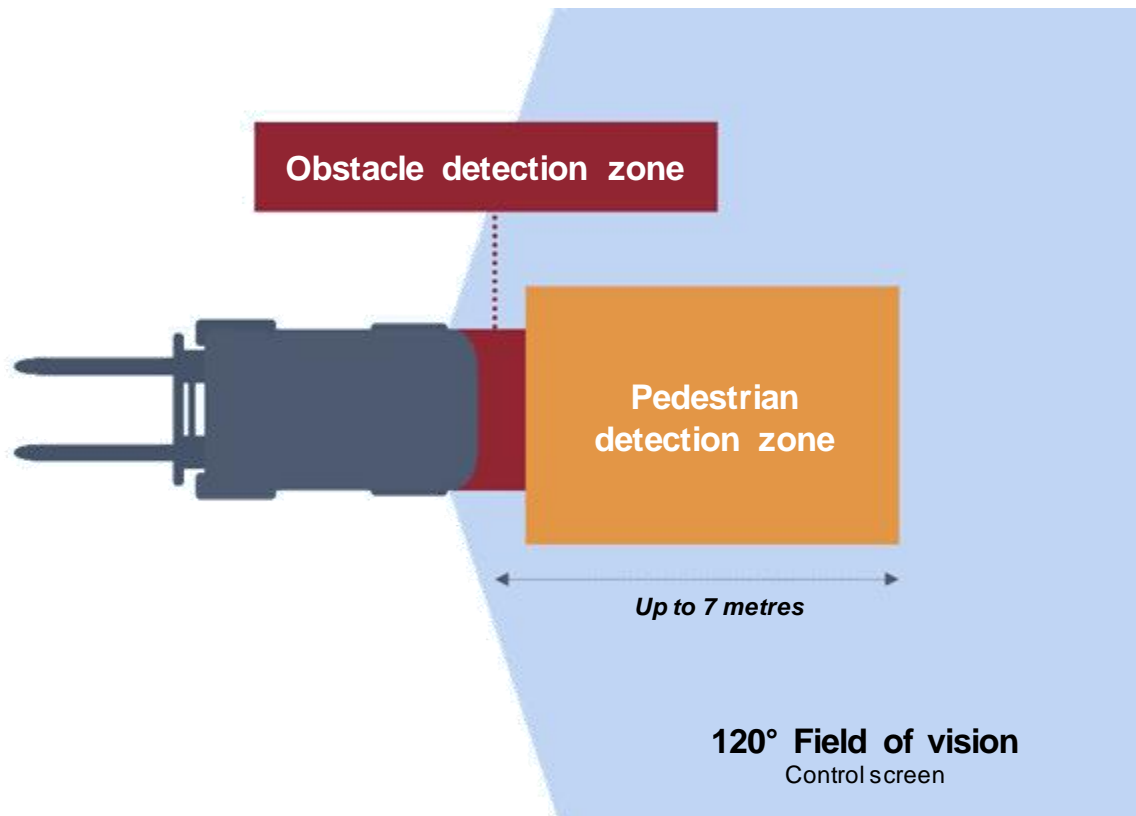
③ **Blaxtair alerts:**

7" color LCD display or LED/Buzzer alerts the driver through visual and audible alarms if a person is detected in the defined danger zone.



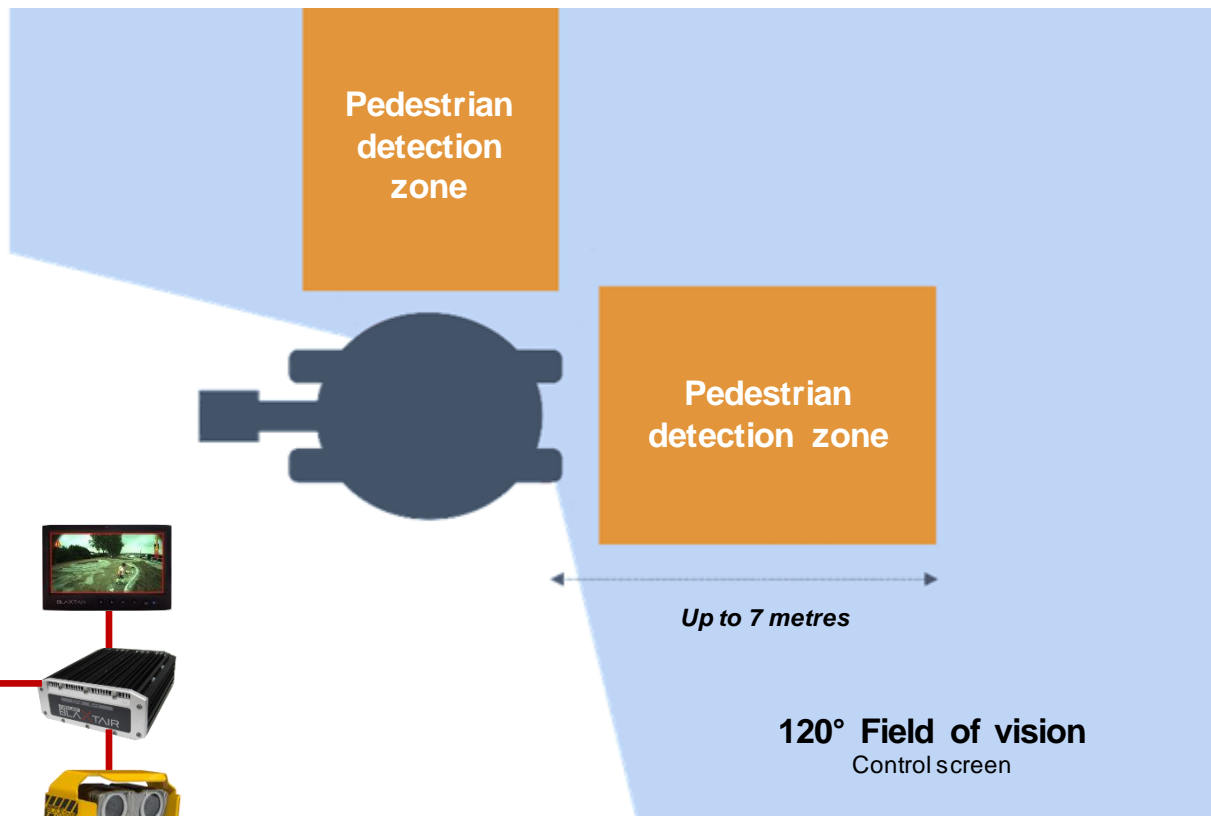
## Configurable system MR90 (single detection)

Example of configuration for counterbalance forklift truck



## Configurable system Double-MR90 (Dual detection)

Example of configuration for excavator



## Blaxtair partner with safety authorities

- Developed in cooperation with **INRS**
- Awarded by **BG BAU** in Germany (Liebherr April 2019)



## Blaxtair benefits: easy to install, flexible & cost-saving

- Embedded plug&play system compatible with all types and brands of industrial vehicles: forklift trucks, wheel loaders, excavators, skid steers, telehandlers, dumpers,...
- Customisable detection zones to adapt to the type of vehicles and working environments (warehouses, recycling sites, factories, logistics, public works, quarries & mines...).
- Multiple configurations and options, as required.



- No costs due to work stoppages, workplace accidents or fatalities.
- Blaxtair reduces maintenance costs due to equipment damage, as it can also alert the driver when any obstacle near the vehicle is likely to damage it (in the all obstacles zone).





## Blaxtair benefits: summary



### Enhanced people safety

Differentiates pedestrians and obstacles



### Highly robust

Operational in harsh environments



### Increased productivity

Only triggers relevant alerts



### Easy to install

Plug & play system



### Better working conditions

Avoids nuisance alarms and alarm fatigue



### Flexible

Compatible with all types and brands of industrial vehicles



### Cost savings

No costs due to work stoppages, workplace accidents or fatalities

## Hong Kong References (VINCI - Contract SCL1103)



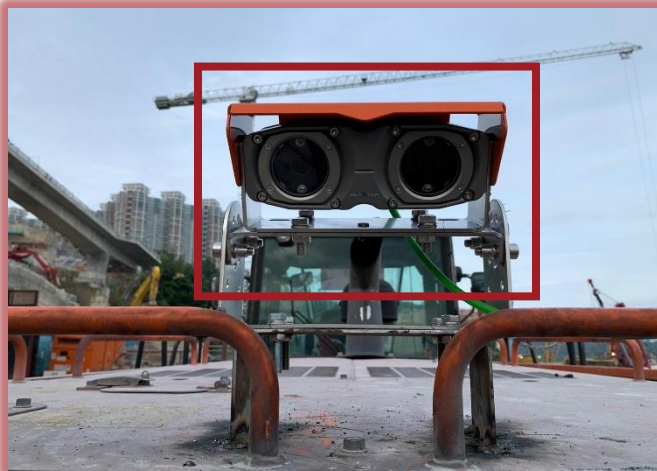
# Hong Kong References

(Dragages Liantang, DB JV TMCLK, BYTP CKR and T2 Trunk Road)

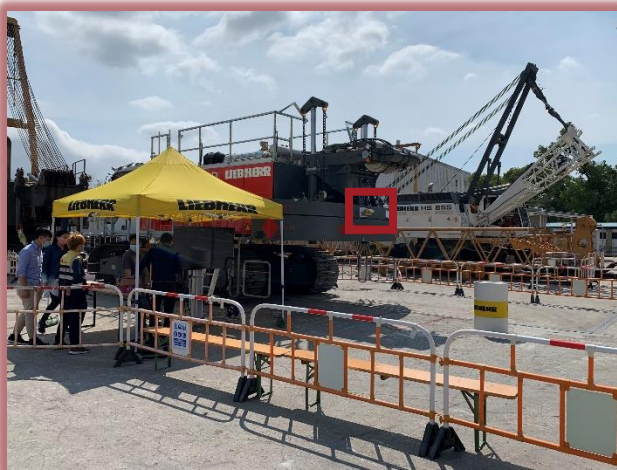




## Hong Kong References (LCSJVTKO-LT)



## Hong Kong References (Liebherr HK - in-house demonstration)





## Listing in CITF Pre-Approved List

Name of the Technology: BLAXTAIR

Type of Technology: Internet Of Things (IoT)

Product type: Safety monitoring system


Code: PA20-020



CONSTRUCTION  
INDUSTRY COUNCIL  
建造業議會



CITF 建造業  
創科基金

Product Descriptions	Reference Photo
<p><b>BLAXTAIR Pedestrian / Machinery Anti-collision Camera</b></p> <p>The BLAXTAIR® System allows users to set detection zone and provides audible alarm and flashing signals on the driver's screen if there are pedestrians or objects within the set zone. A monitor installed in the cabin provides continuous footage captured by the sensor head. It can ensure the safety of the pedestrians nearby the work site.</p>	

Blaxtair® Video  
Pedestrian detection on industrial and construction site

<https://www.youtube.com/watch?v=ZaOjJlxGddk&feature=youtu.be>



THANK YOU  
FOR YOUR  
ATTENTION



Alfred Kam @ EBSL  
Chief Commercial Officer

BLAXTAIR®

Contact us by sending an email to [blaxtair@ebsl.hk](mailto:blaxtair@ebsl.hk) or  
completing a form <https://bit.ly/3a09vec>